

owala®

PRODUCT USAGE AND INSTRUCTIONS

SUN-DAY TOTE

**Built for beach days.
Or everyday adventures.**

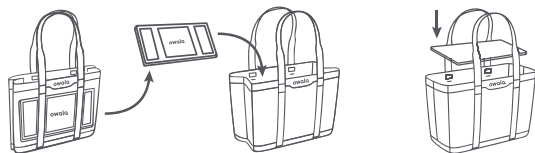
I hold 34 liters or...



Carry me your way.



Setup is simple.



Removing the straps.

1. Locate the slit next to the buckle.
2. Feed the buckle through the slit.
3. Slide the strap free.

Instructions For Use:

- Do not exceed 40 lbs. Distribute weight evenly.
- Allow the tote to dry completely before storing. Store in a cool, dry place away from direct sunlight.
- Do not expose to extreme temperatures. To clean bag and straps, hand wash with mild soap, rinse, and air dry.
- Avoid the use of abrasives.
- Keep fingers clear of the seam between the bottom and sides of the tote to avoid any pinching or harm.



More of a visual person?
Scan the QR code for
care and instructions video.